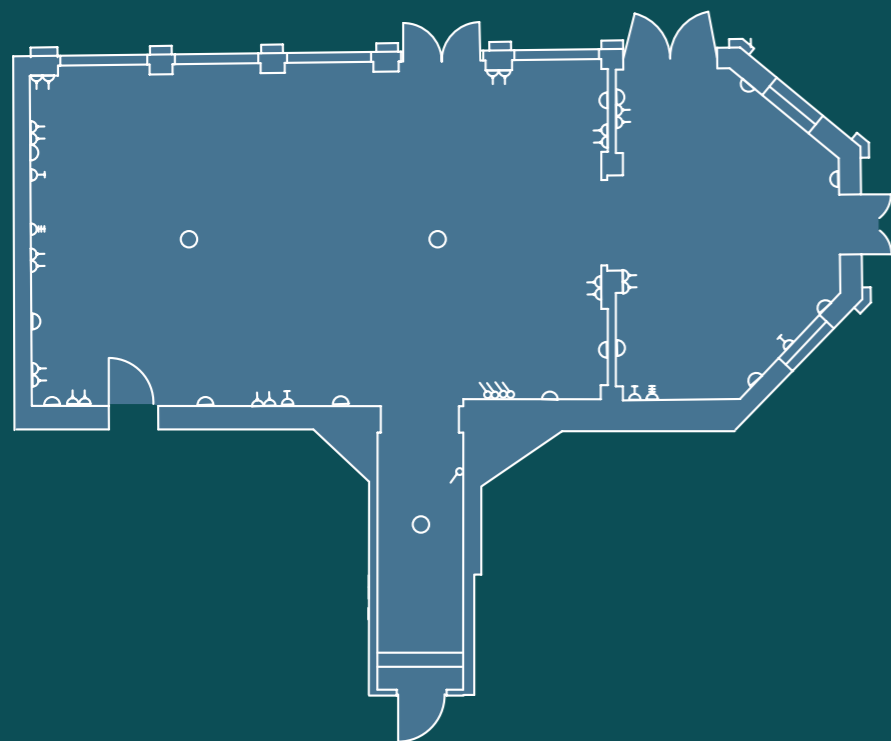









Savernake Room



- key
-  - Telephone & Data Socket
 -  - TV Socket
 -  - Light Switches
 -  - Double Socket
 -  - Light Pendant
 -  - Wall Light
 -  - Spotlight

Savernake Room



A beautifully light and airy room overlooking the gardens



Balmer Lawn

THE NEW FOREST HOTEL

Overlooking the Hotel's main gardens, the Savernake Room has excellent natural daylight and, as with all the conference suites, a full climate control system. French doors access a terrace which then leads into the gardens. The room has a break out area and connecting doors into the Arden Room which can be used as a syndicate room. The room also benefits from data points which allow ADSL/Broadband access.

CONFIGURATION CAPACITIES

Room Layout	Savernake Room
U Shape	30
Classroom	20
Boardroom	33
Theatre	60
Banquet	50
Reception	100

SUITE DIMENSIONS

Room dimensions	Avon Room
Length - feet	33'
Length - meters	10.1
Width - feet	19'
Width - meters	5.78
Height - feet	8'1"
Height - meters	2.7